

Interpretation of IWB-1000 exemptions/application

Question has been presented as to the exemptions listed in IWB-1220, Components Exempt from Examination, IWB-1220(a) and IWB-1220(b)(1).

IWB-1220(a) states...

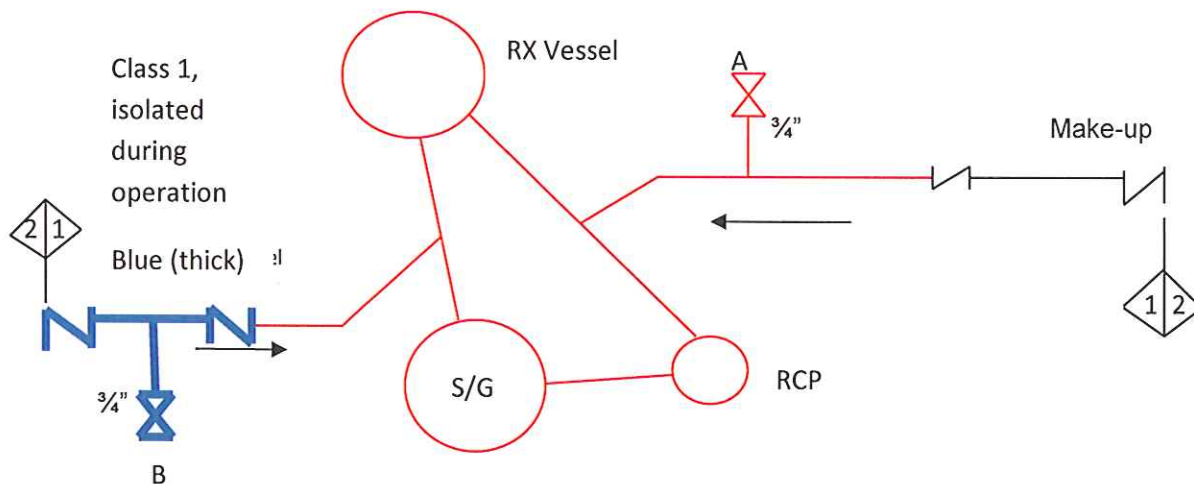
(a) components that are connected to the reactor coolant system and part of the reactor coolant pressure boundary, and that are of such a size and shape so that upon postulated rupture the resulting flow of coolant from the reactor coolant system under normal plant operating conditions is within the capacity of makeup systems that are operable from on-site emergency power. The emergency core cooling systems are excluded from the calculation of makeup capacity.

IWB-1220(b)(1) states...

(b)(1) piping of NPS 1 and smaller, except for steam generator tubing;

This conflict in exemptions is explained as follows

Typical make-up capability in a PWR is .295" ID or 3/8 tubing (IWB-1220(a)). This exemption is applied wherever makeup can be impacted within the boundary, Valve (A). The 1" exemption (IWB-1220 (b)(1)) applies to Class 1 piping that is **NOT** impacted by makeup, Valve (B).



Questions:

Do you include piping 1" and less down to the makeup size (Typically .295" ID in a PWR) in your ISI Program as B-J, B9.40?

Do you include these welds in you sample for examination?